





PROJECT		REF		REV	ITEM CODE	
LOCATION		DATE			PAGE	

SANITARY WARE SPECIFICATION SHEET

Item Descriptions	GROHE (Germany) "Concetto" Chrome plated single-lever basin mixer 1/2" S-Size with temperature limiter	<div>Illustration/ Drawing</div> <div></div> <div><div> GROHE SilkMove®</div><div> GROHE StarLight®</div><div> GROHE EcoJoy®</div><div> GROHE QuickFix®</div></div>
Dimensions	L101 x W46 x H185 mm	
Model	3224010E	
Finish	Chrome Plated	
Country of origin Manufacturer	Thailand GROHE AG	
Supplier	Acme Sanitary Ware Co. Ltd Mr. Eric Wong/ Mr. Don Yuen (852) 2388-7171 / (852) 2710-8012 acme@acmesanitary.com.hk www.acmesanitary.com.hk	
Contact Tel/Fax		<div></div>
E-mail		
Website		
<div><div><div>"Concetto" Basin mixer 1/2" S-Size</div><div><ul style="list-style-type: none">• monobloc installation• metal lever• 28 mm ceramic cartridge with GROHE SilkMove• adjustable flow rate limiter• temperature limiter• GROHE StarLight chrome finish• GROHE EcoJoy SpeedClean mousseur 5.7 l/min• GROHE QuickFix installation system with centering support• smooth body• flexible connection hoses</div></div><div></div></div>		

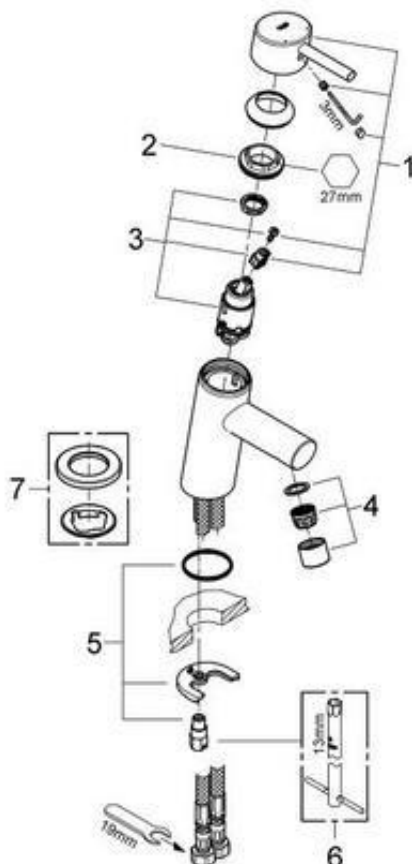


Note:

* All information of the above is for the reference only. No prior notice is made if any changes.

PROJECT		REF		REV	ITEM CODE	
LOCATION		DATE			PAGE	

SANITARY WARE SPECIFICATION SHEET



GROHE SilkMove cartridge technology for smooth handling

This premium tap comes with a continuously variable water temperature and volume adjustment technology, ensuring effortless lever operation even after years of use.



Easy to clean thanks to the GROHE StarLight chrome coating

Just wipe the tap down with a dry cloth – the ultra smooth surface finish is scratch resistant and ensures a lasting luminous sheen. You'll save plenty of time cleaning while your tap always looks shiny and new.



GROHE EcoJoy with water-saving function for reduced consumption

GROHE EcoJoy reduces water consumption by up to 50% without compromising on performance. Whenever you turn on your tap, you will enjoy a full jet of water while saving money nonetheless.



GROHE QuickFix Plus quick and easy installation in a few simple steps

Save time on the installation of your tap with GROHE QuickFix Plus. Consisting of fewer parts, our new system makes the installation process quicker and easier than ever.

Pos.-nr.	Prod. description	Order-nr.
1	Lever	46753000
2	Fitting ring	46715000
3	Cartridge	46580000
4	Mousseur	13935000
5	Shank fastening assembly	46249000
7	Mounting wrench	19017000*
7	Base plate	48165000*

* Optional accessories



Note:

* All information of the above is for the reference only. No prior notice is made if any changes.